

ELEMENTAL R40

A tantalizing infusion of pineapple, honey, green tea and grapefruit soda

ETHER R40

Inspired by the woodlands and summer mornings, this mocktail infuses apples, blueberries, thyme and soda

ALKALI R40

A delicate balance of acid and alkalinity. A mocktail that infuses pineapple, coconut, clarified milk and soda

KINGS YELLOW R40

A tour of the royal orient this mocktail infuses apple, lemongrass, cardamom and soda

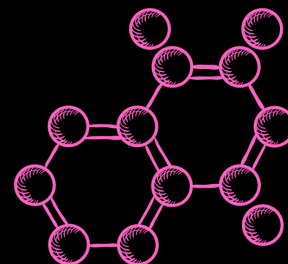
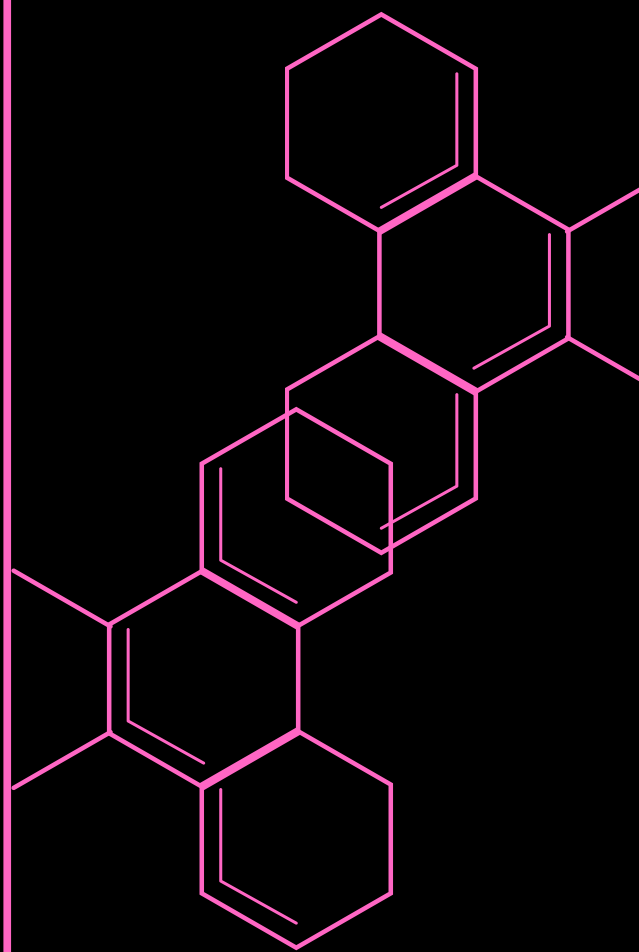
DRAGON'S BLOOD R40

A journey down the Hibiscus Coast, this mocktail infuses Citrus Shrub, Hibiscus and orange

FOOL'S GOLD R40

Follow the spice route and indulge in a fusion mocktail that combines notes of orange, rooibos and smoked cinnamon

MOCKTAIL
MENU



PROHIBITION MENU
ALCOHOL FREE

Cinnabar

THE ART OF MIXOLOGY

AQUA REGIA R55

Hibiscus tea infused vodka with freshly pressed apple juice and berry, topped with soda

SALT PETER R65

Blended scotch with toasted coconut topped with our house made chamomile soda

EASTERN ELIXIR R55

Thyme infused vodka paired with fresh berry, apple and shaken with clarified milk

STIBNITE R60

Aromatic Gin shaken with fresh lime, honey and a dash of Absinthe

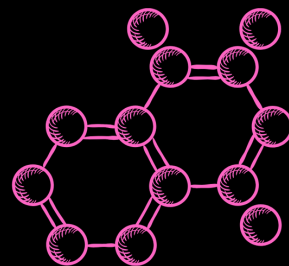
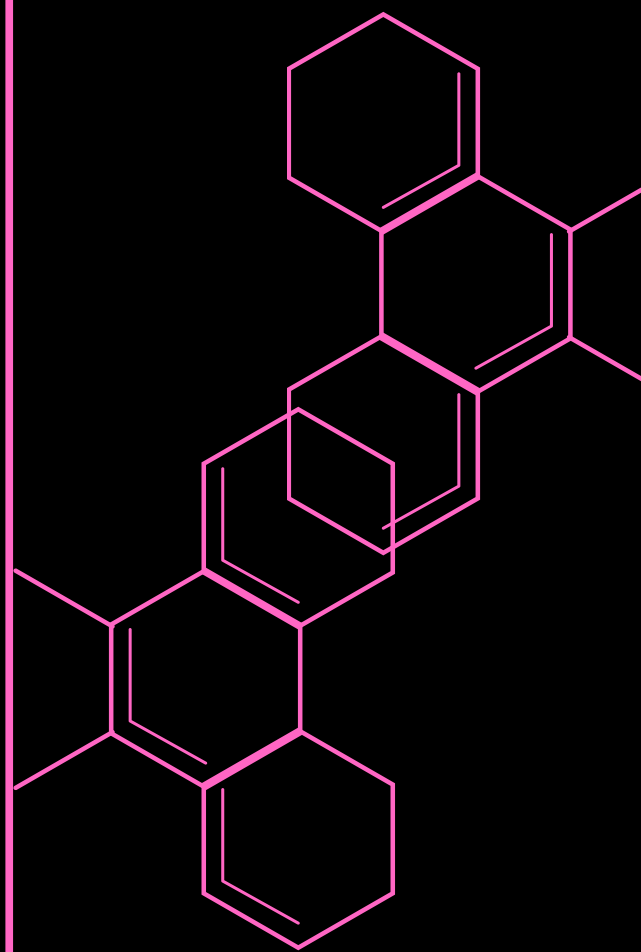
LUNAFICATION R70

White rum with bianco vermouth, clarified Campari and finished with lemon infused olive oil and grapefruit zest

AQUA VITAE R75

Pineapple infused bourbon with toatsed coconut and aromatic bitters finished with orange zest

COCKTAIL
MENU



SIGNATURE MENU

Cinnabar

THE ART OF MIXOLOGY

BLENDING SCOTCH

JOHNNIE WALKER RED
JOHNNIE WALKER BLACK
DEWAR'S 12
DEWAR'S 15

BLENDING MALTS

NAKED GROUSE
MONKEY SHOULDER

SINGLE MALTS

GLENFIDDICH 12
GLENLIVET FOUNDERS RESERVE
MACALLAN 12 DOUBLE OAK

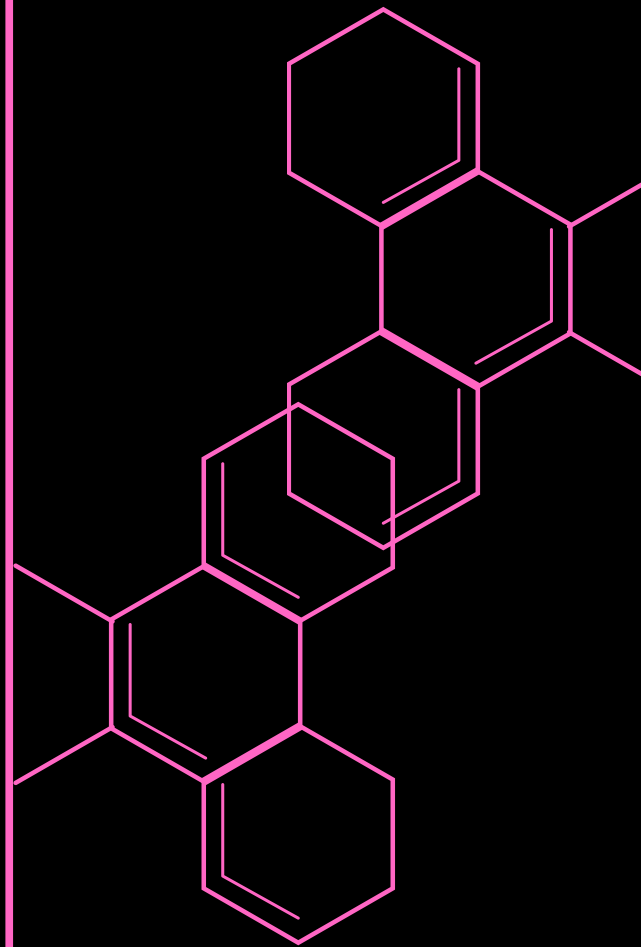
IRISH WHISKEY

BUSHMILLS
JAMESON
JAMESON SELECT RESERVE

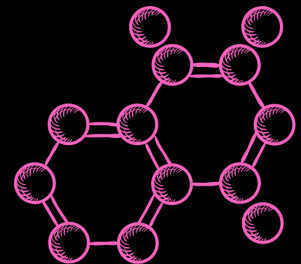
BOURBON / AMERICAN

JACK DANIELS
MAKERS MARK
BUFFALO TRACE

WHISK(E)Y MENU



C



GOLDEN NECTAR

Cinnabar

THE ART OF MIXOLOGY

RED

ALVIS DRIFT MERLOT R140 / R40

GROOTE POST OLD MANS BLEND R140 / R40

ANURA PINOTAGE R190

WHITE

ALVIS DRIFT SAUVIGNON BLANC R130 / R38

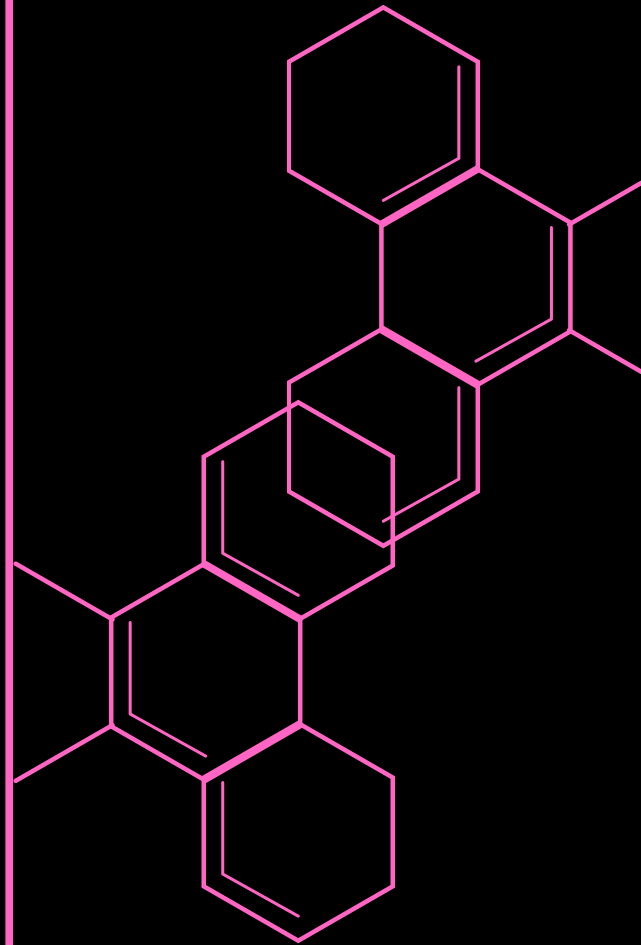
DIEMERSFONTEIN CHENIN BLANC R130 / R38

OAK VALLEY F.O.Y. SAUVIGNON BLANC R210

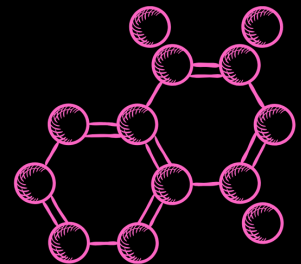
ROSE

FAIRVIEW G.D.R R130 / R38

WINE LIST



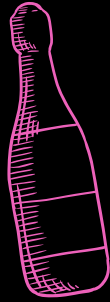
C



THE CELLAR

Cinnabar

THE ART OF MIXOLOGY



GRAHAM BECK BRUT R450 / R70

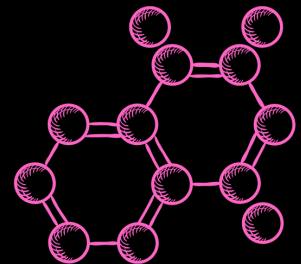
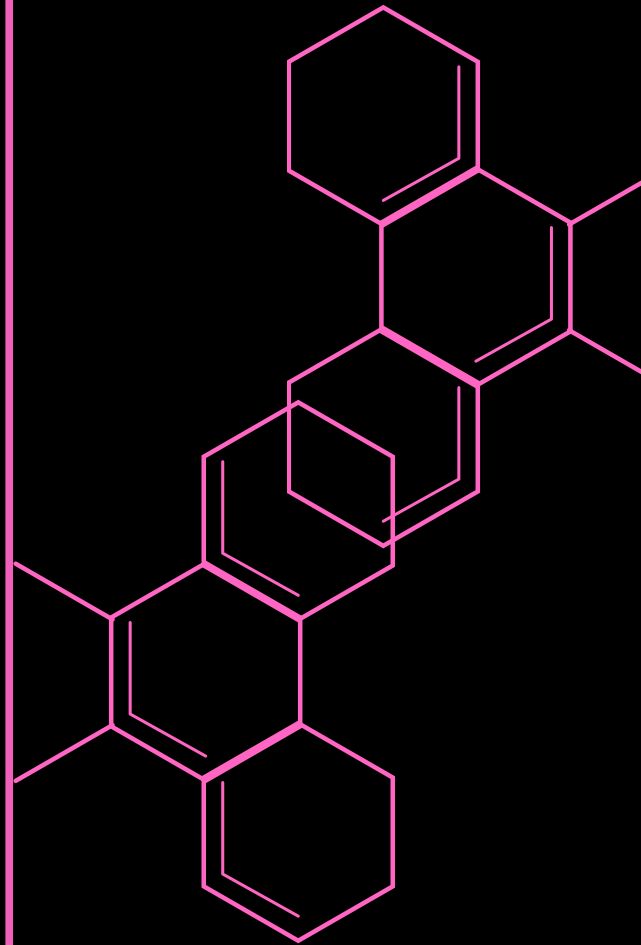
GRAHAM BECK BRUT ROSE R450

MOET & CHANDON BRUT R1300

MOET & CHANDON BRUT ROSE R1300

MOET & CHANDON NECTAR R1300

MARTINI PROSECCO R400 / R60



BUBBLES

Cinnabar

THE ART OF MIXOLOGY



EL JIMADOR REPESADO R25

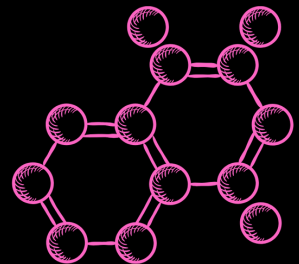
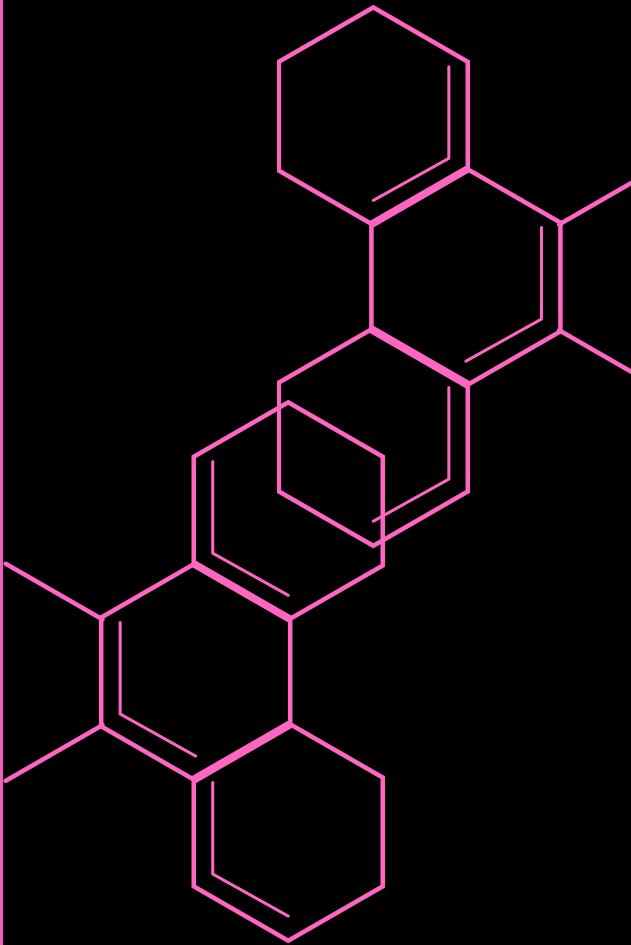
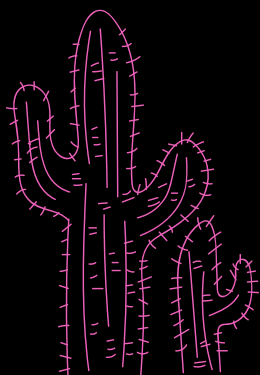
EL JIMADOR BLANCO R25

PATRON REPESADO R60

PATRON BLANCO R50

DON JULIO R60

JAGEMEISTER R25



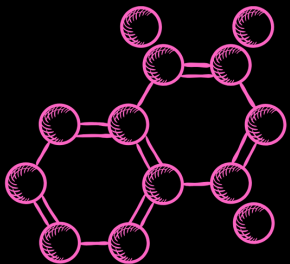
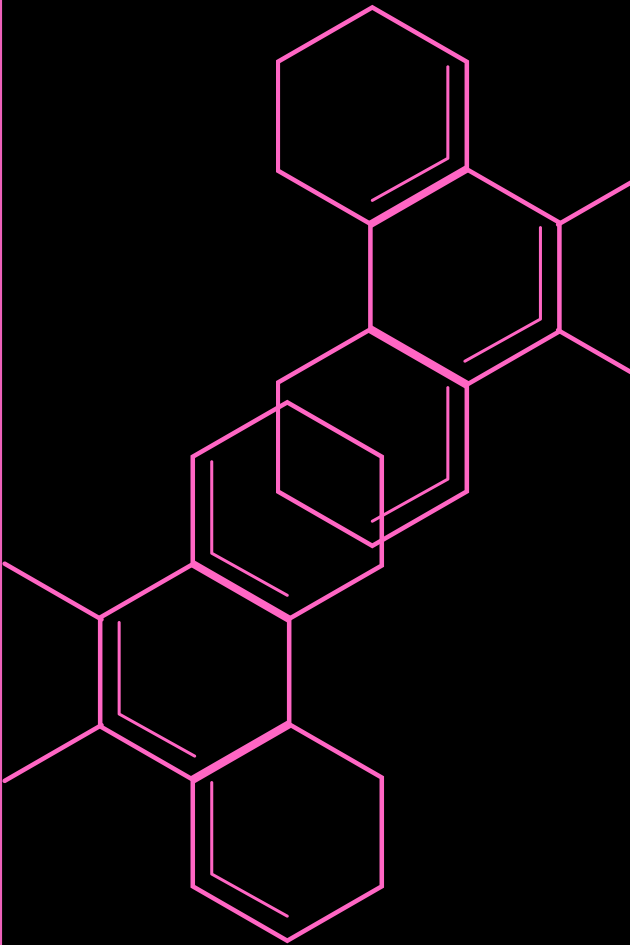
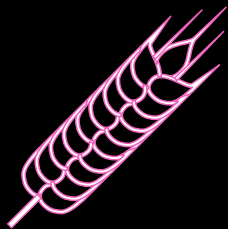
Cinnabar

THE ART OF MIXOLOGY

BIG SHOT



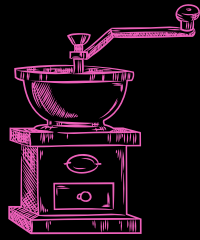
- BLACK LABEL R25
- CASTLE LIGHT R25
- HEINEKEN R30
- WINDHOEK DRAFT R32
- STELLA ARTOIS R35
- SAVANNA DRY R30
- DRAFT R25 / R40



THE BREWERY

Cinnabar

THE ART OF MIXOLOGY



CAPPUCCINO R: R22 L: R27

ESPRESSO S: R15 D: R20

MACCHIATO R17

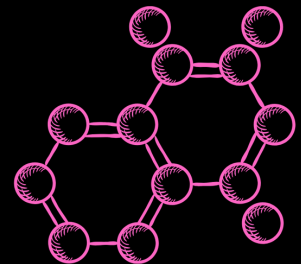
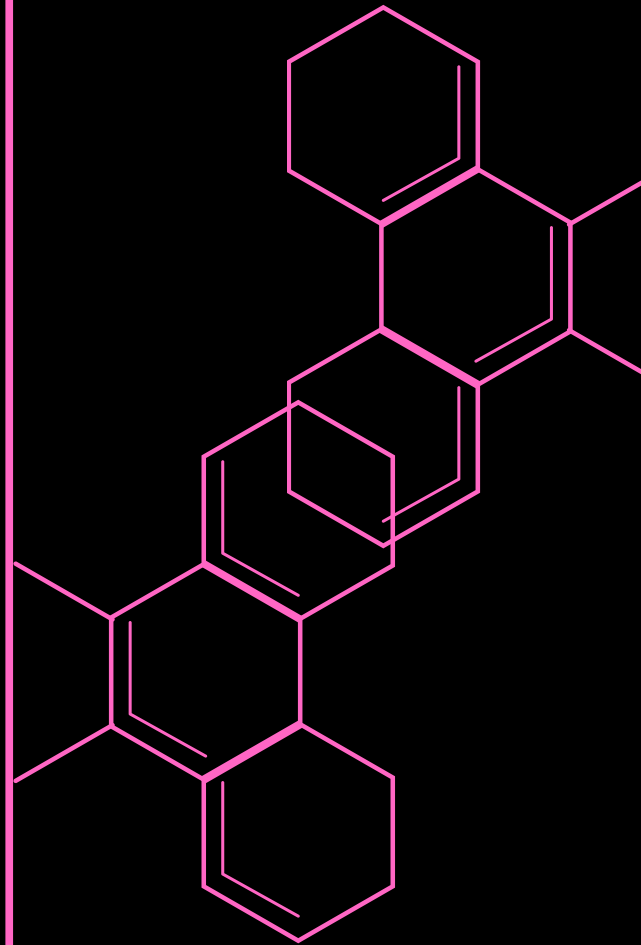
CAFE MOCHA R32

AMERICANO R: 17 L: 20

HOT CHOCOLATE R: 25 L: 28

CORTADO R22

LATTE R27



BARISTA BLEND

Cinnabar

THE ART OF MIXOLOGY